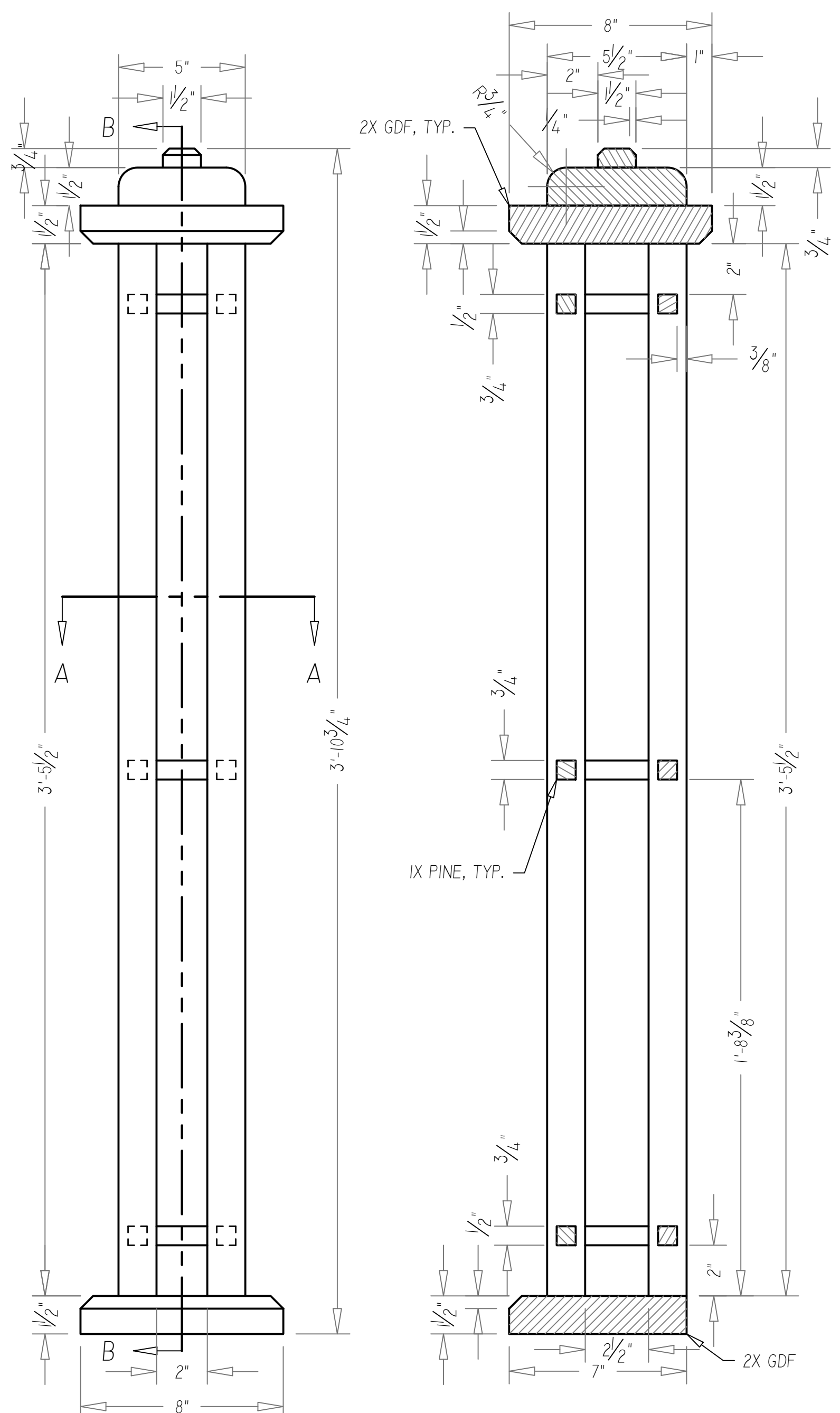
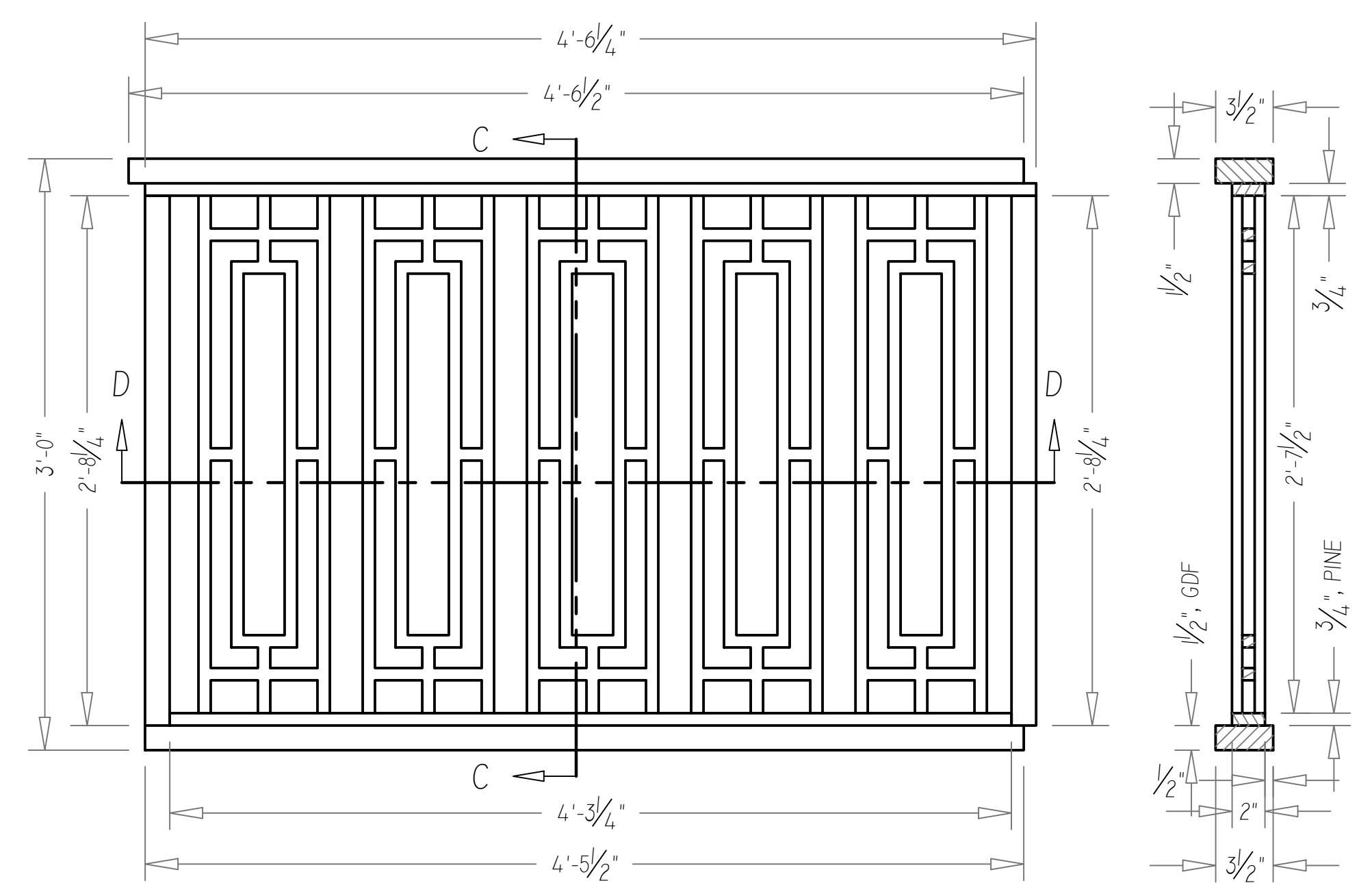


SECTION A-A
SCALE 3" = 1'-0"

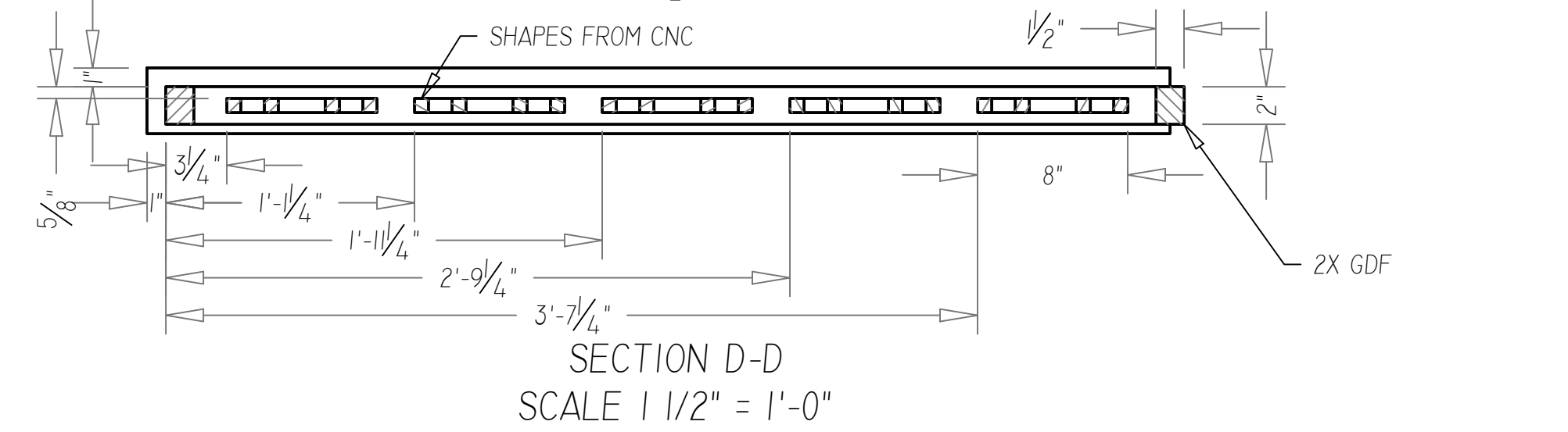


FRONT ELEVATION SCALE: 3" = 1'-0"
SECTION B-B SCALE 3" = 1'-0"

A NEWELL POST
SEE DESIGN DRAWING FOR INSTALLATION

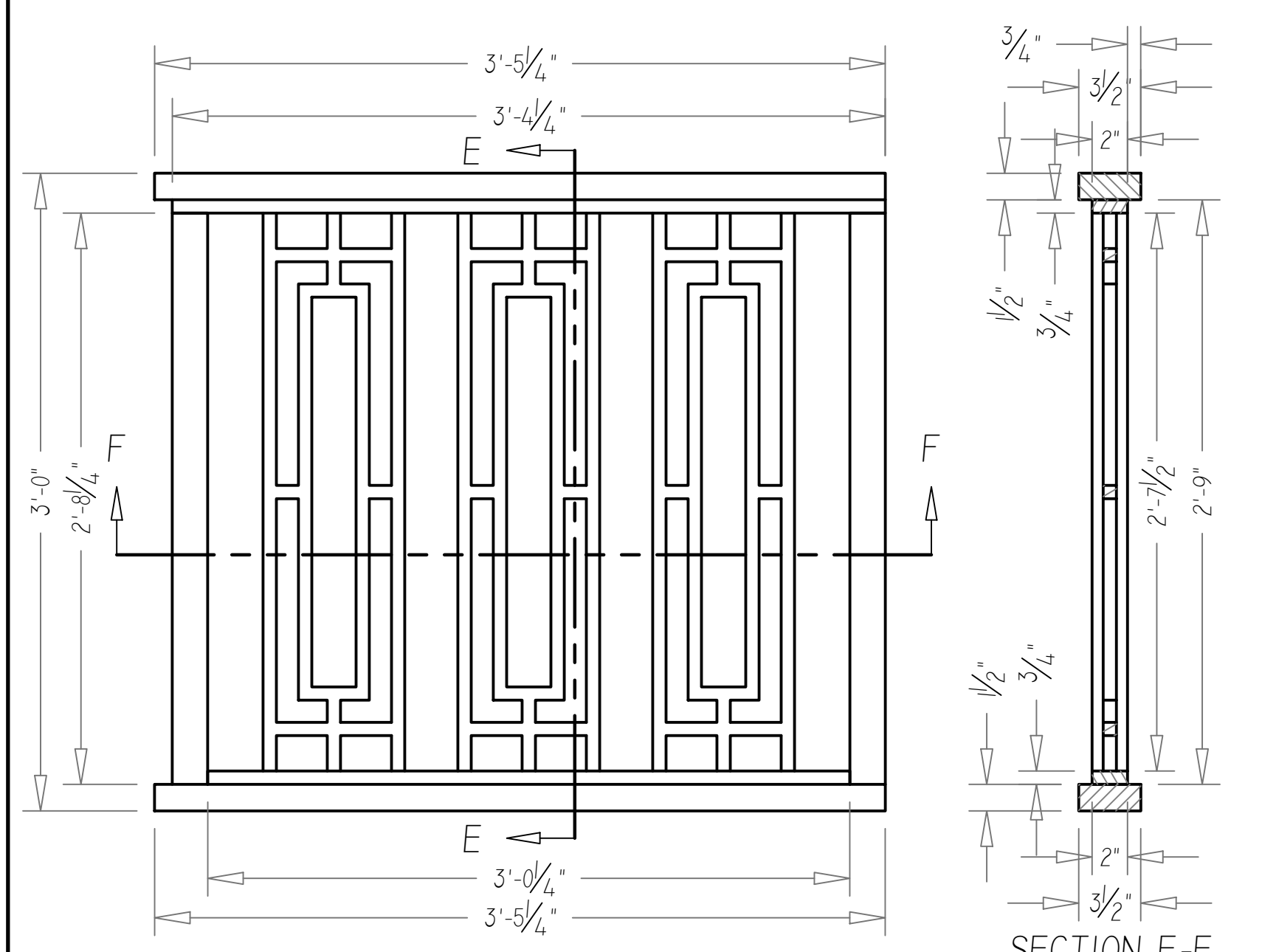


FRONT ELEVATION
SCALE: 1/2" = 1'-0"

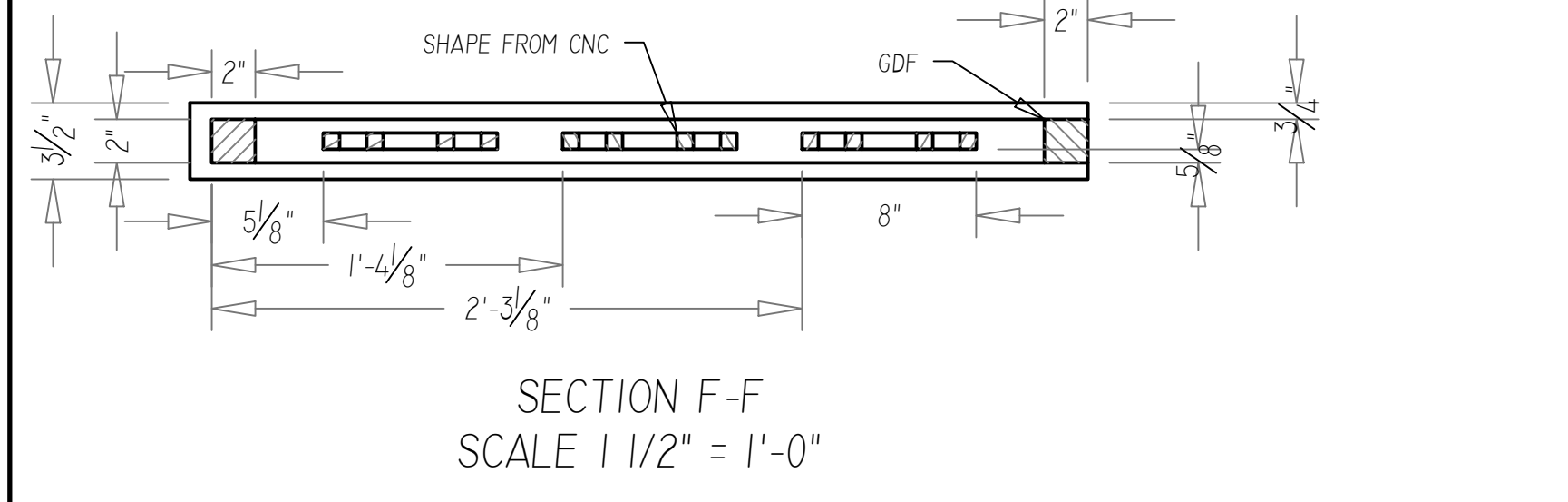


SECTION D-D
SCALE 1 1/2" = 1'-0"

B LONG RAILING
SEE DESIGN DRAWING FOR INSTALLATION

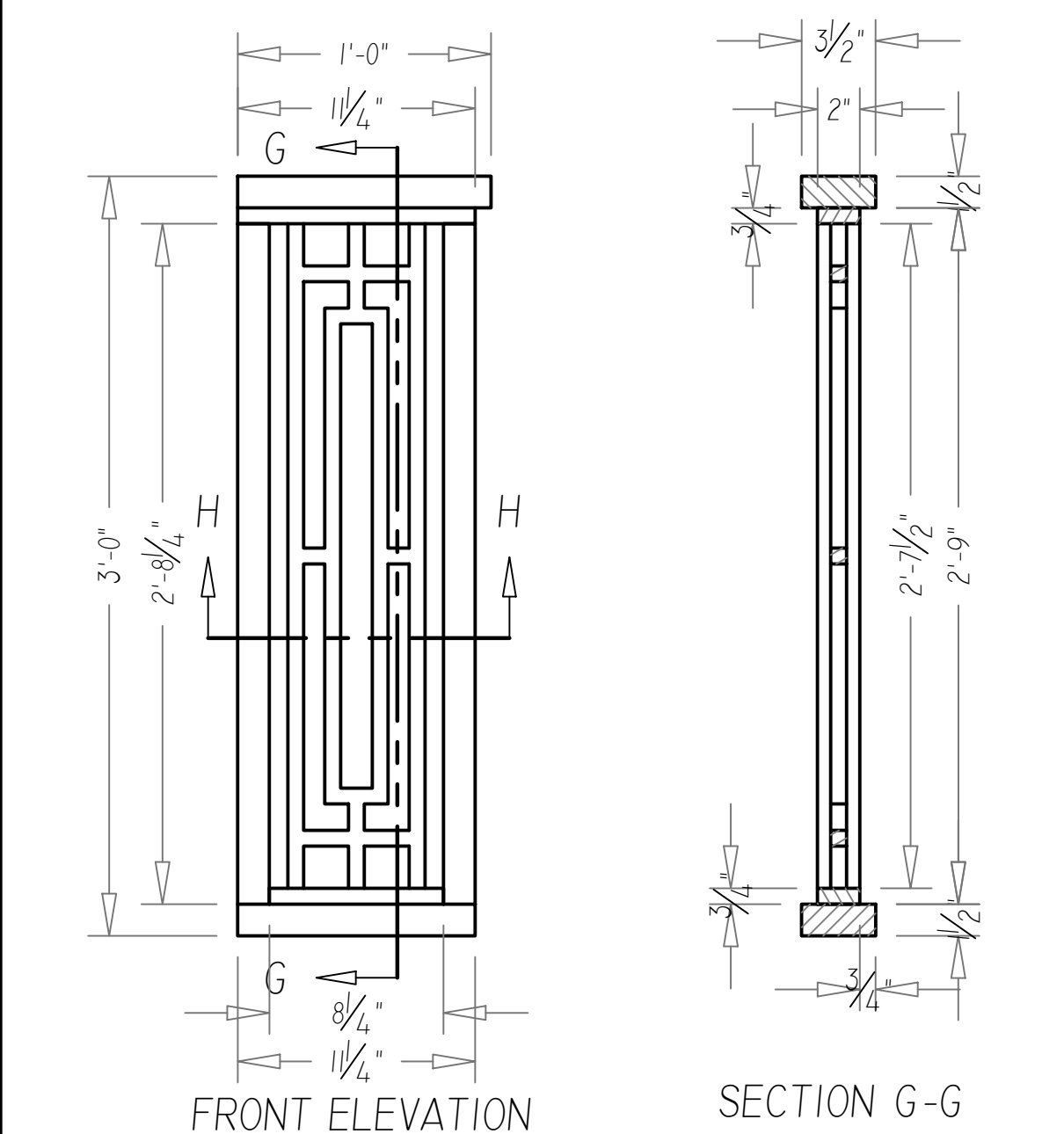


FRONT ELEVATION
SCALE: 1/2" = 1'-0"

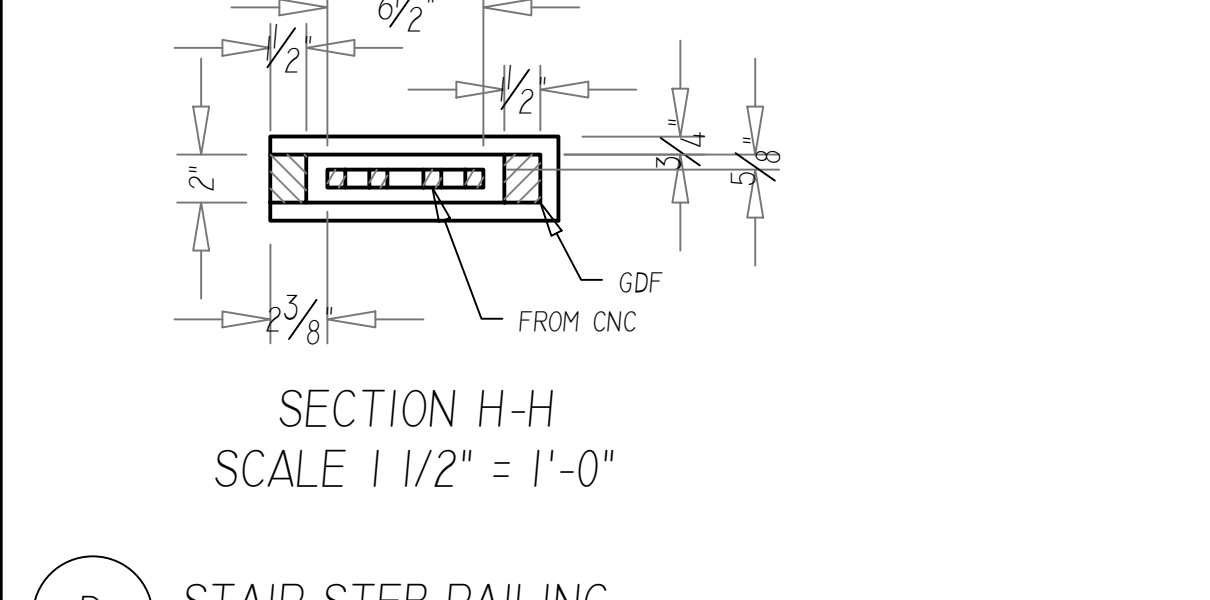


SECTION F-F
SCALE 1 1/2" = 1'-0"

C SHORT RAILING
SEE DESIGN DRAWING FOR INSTALLATION

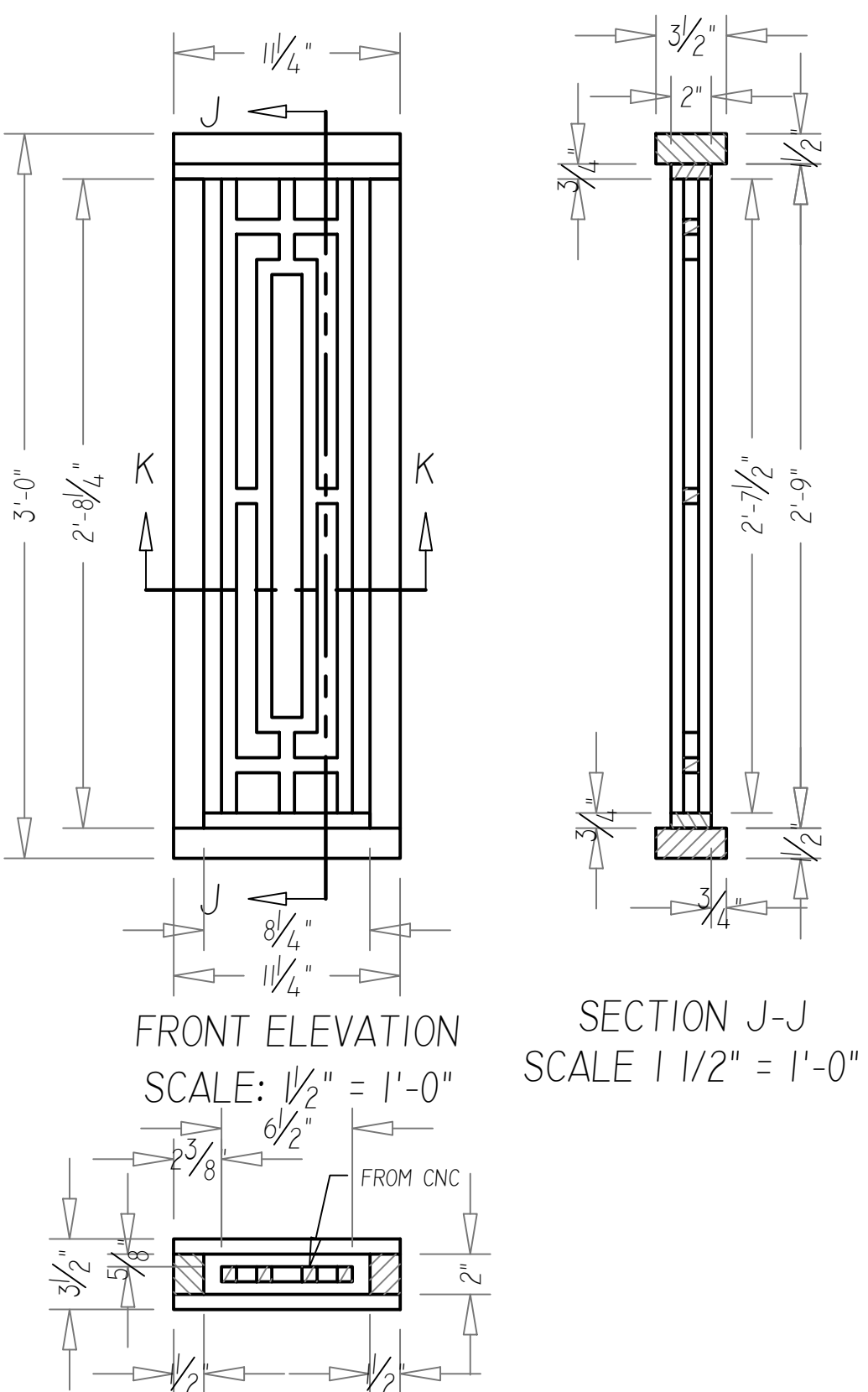


FRONT ELEVATION
SCALE: 1/2" = 1'-0"

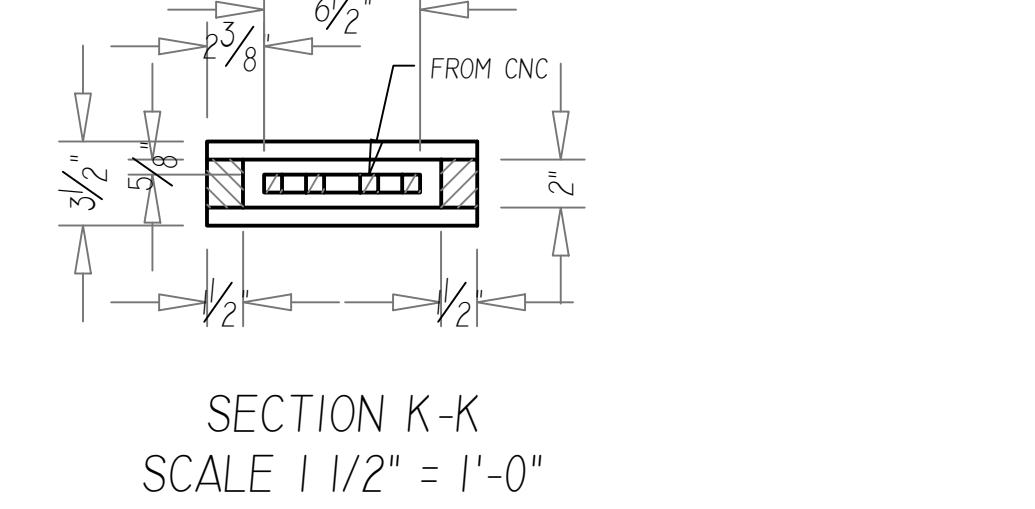


SECTION H-H
SCALE 1 1/2" = 1'-0"

D STAIR STEP RAILING
SEE DESIGN DRAWING FOR INSTALLATION
BUILD 4

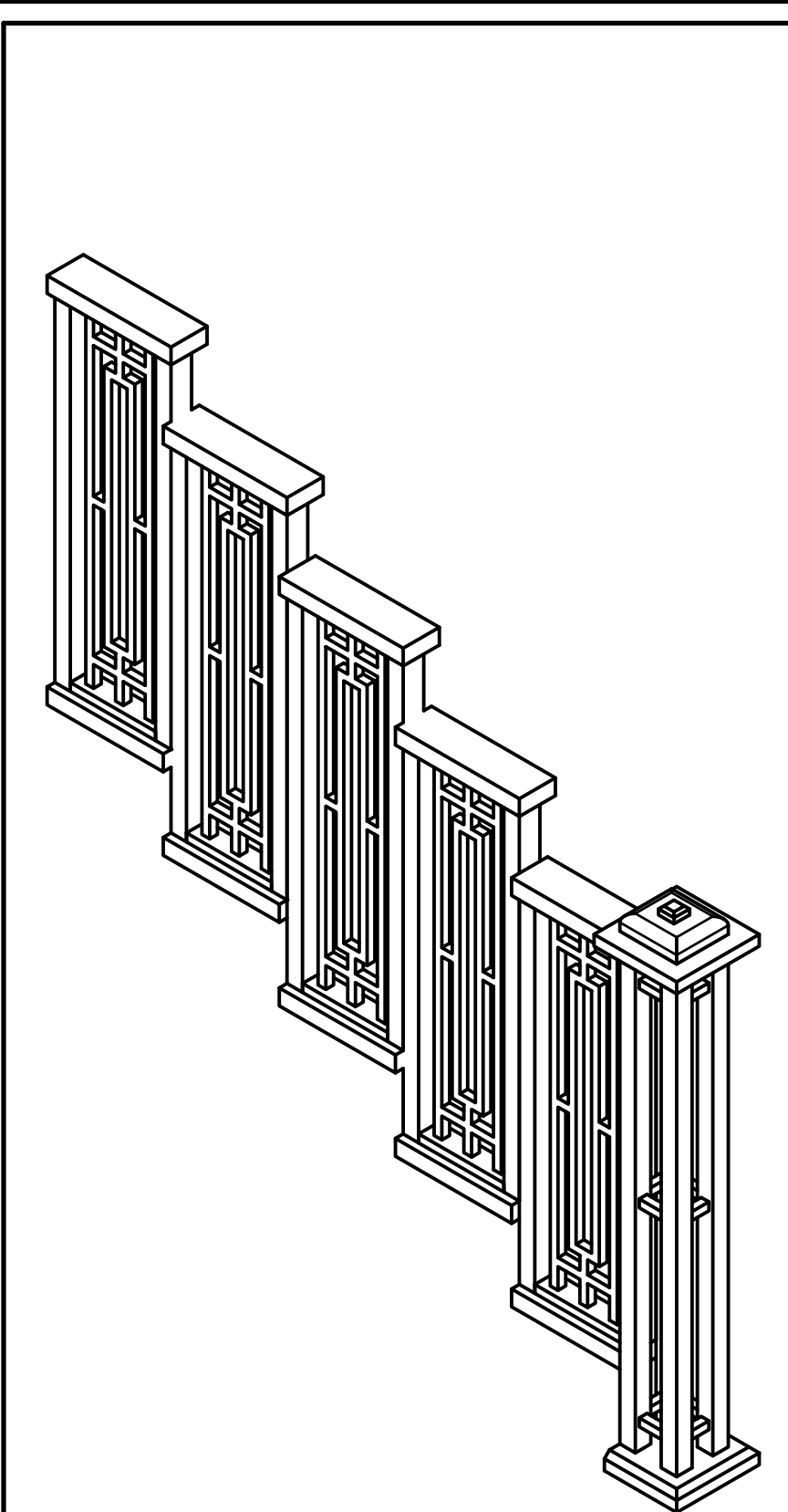


FRONT ELEVATION
SCALE: 1/2" = 1'-0"

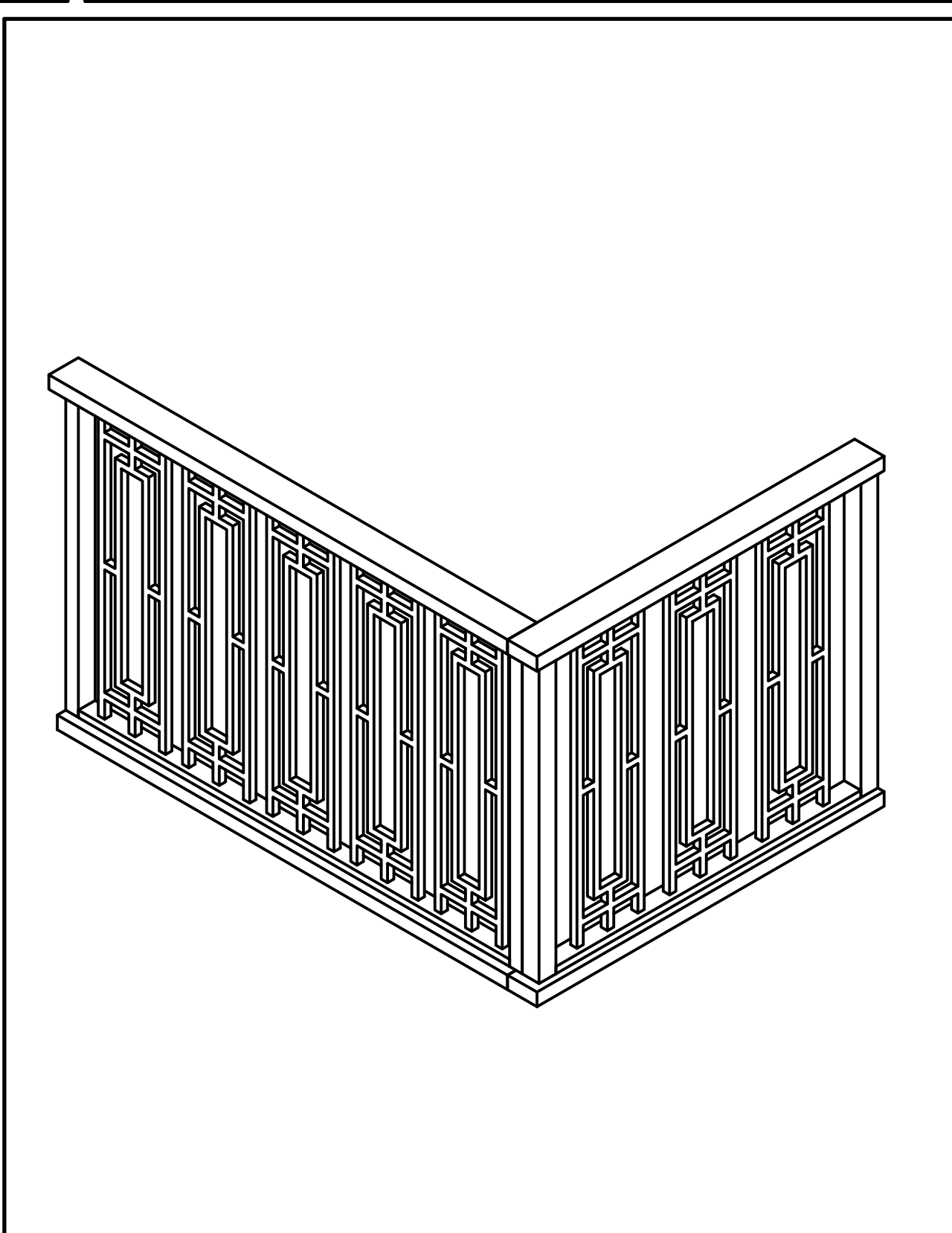


SECTION K-K
SCALE 1 1/2" = 1'-0"

E BOTTOM STEP RAILING
SEE DESIGN DRAWING FOR INSTALLATION



STAIRCASE ASSEMBLY
ISO VIEW
DO NOT SCALE



TOP HANDRAIL ASSEMBLY
ISO VIEW
DO NOT SCALE

NOTES:
1. MATERIALS: 1X PINE, 2X GDF, 3/4" PLY FROM CNC.
2. CUT LIST CONTAINS MULTIPLES.
3. THERE ARE TWO SIZES OF CNC CUTOUTS, SMALLER ONES FOR THE STEPS.
4. INSTALL ON STAIRS PER DESIGN DRAWING

CUT LIST		
A. DRAWING "A"	B.C. 1X 2" PINE	D.B. 2X 2" GDF
A.A. 2X 8" GDF	B.C.A. 1 @ 4'-6 1/4"	D.B.A. 8 @ 2'-8 1/4"
A.A.A. 1 @ 8" (W/ CHAMFER)	B.C.B. 1 @ 4'-3 1/4"	D.C. 1X 2" PINE
A.A.B. 1 @ 7" (W/ CHAMFER)	B.D. 3/4" PLY	D.C.A. 4 @ 1 1/2"
A.B. 2X 5" GDF	B.D.A. FROM CNC	D.C.B. 4 @ 8 1/4"
A.B.A. 1 @ 5 1/2" (W/ ROUNDOVER)	C. DRAWING "C"	D.D. 3/4" PLY
A.C. 1/2" X 1/2" GDF	C.A. 2X 3 1/2" GDF	D.D.A. FROM CNC
A.C.A. 4 @ 3'-5 1/4"	C.A.A. 2 @ 3'-5 1/4"	E. DRAWING "E"
A.C.B. 1 @ 3/4" (W/ CHAMFER)	C.B. 2" X 2" GDF	E.A. 2X 3 1/2" GDF
A.D. 3/4" X 3/4" PINE	C.B.A. 2 @ 2'-8 1/4"	E.A.A. 2 @ 1 1/2"
A.D.A. 6 @ 2"	C.C. 1X 2" PINE	E.B. 2X 2" GDF
A.D.B. 6 @ 2 1/2"	C.C.A. 1 @ 3'-4 1/4"	E.B.A. 2 @ 2'-8 1/4"
B. DRAWING "B"	C.C.B. 1 @ 3'-0 1/4"	E.C. 1X 2" PINE
B.A. 2X 3 1/2" GDF	C.D. 3/4" PLY	E.C.A. 1 @ 1 1/2"
B.A.A. 1 @ 4'-6 1/4"	C.D.A. FROM CNC	E.C.B. 1 @ 8 1/4"
B.A.B. 1 @ 4'-5 1/2"	D. DRAWING "D"	E.D. 3/4" PLY
B.B. 2X 2" GDF	D.A. 2X 3 1/2" GDF	E.D.A. FROM CNC
B.B.A. 2 @ 2'-8 1/4"	D.A.A. 4 @ 1'-0"	
	D.A.B. 4 @ 1 1/2"	