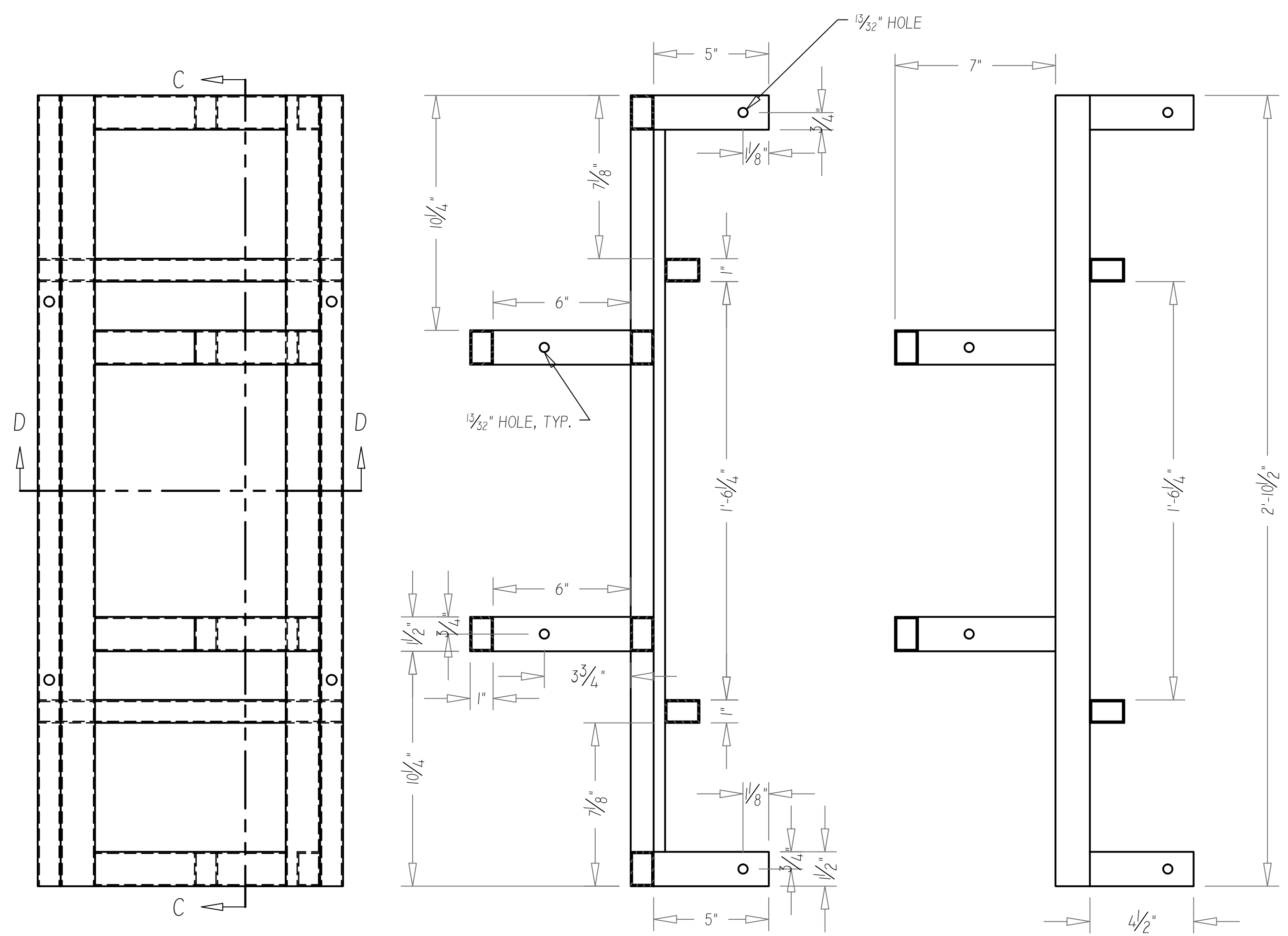


BOTTOM ELEVATION
SCALE: 3" = 1'-0"

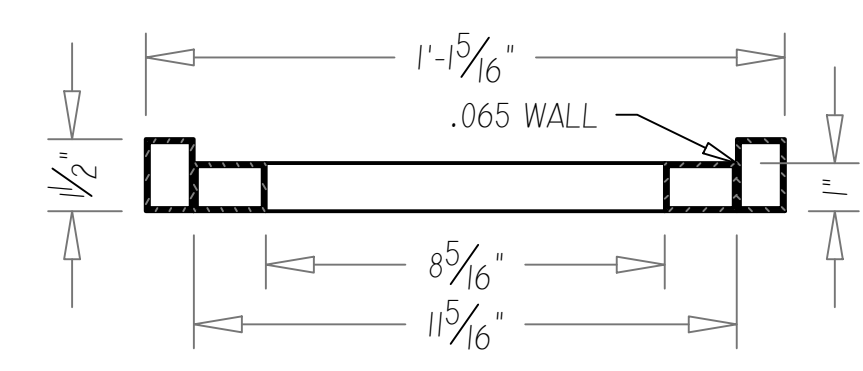
SECTION A-A
SCALE 3" = 1'-0"



TOP ELEVATION
SCALE: 3" = 1'-0"

SECTION C-C
SCALE 3" = 1'-0"

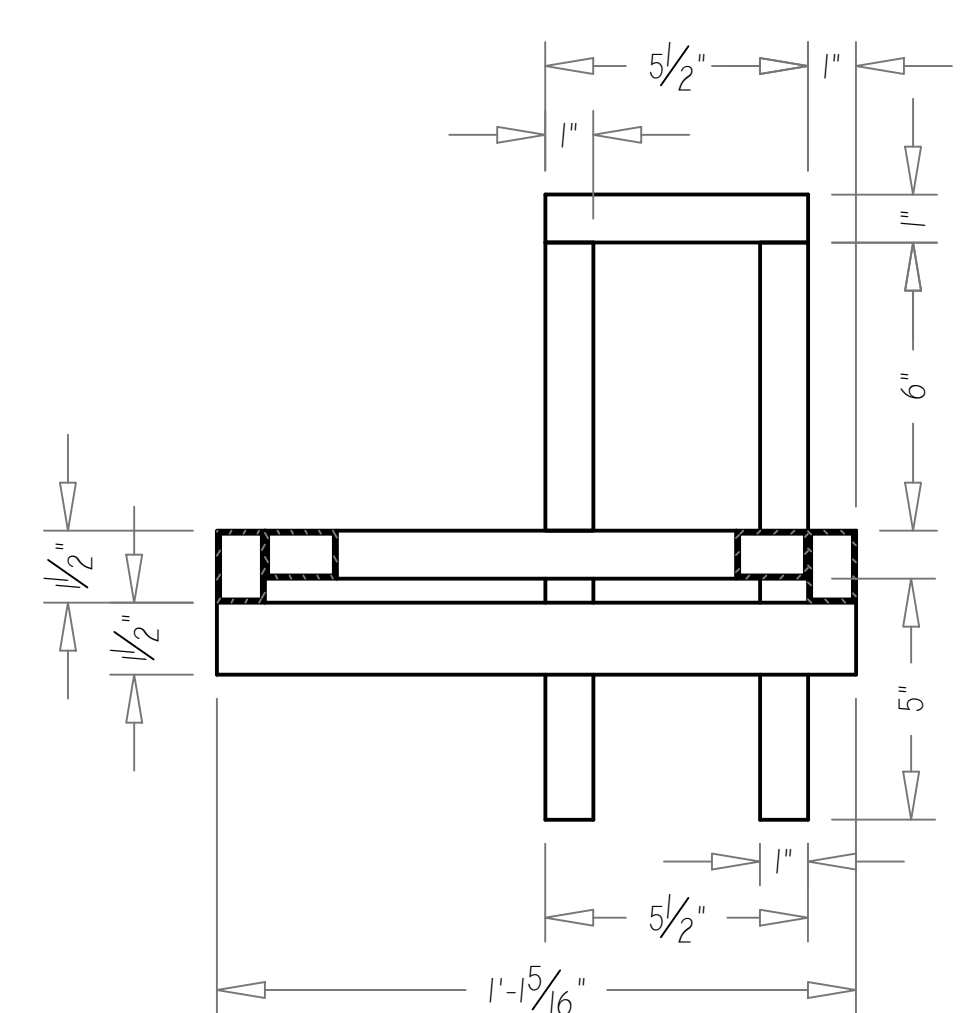
RIGHT VIEW
SCALE: 3" = 1'-0"



SECTION B-B
SCALE 3" = 1'-0"

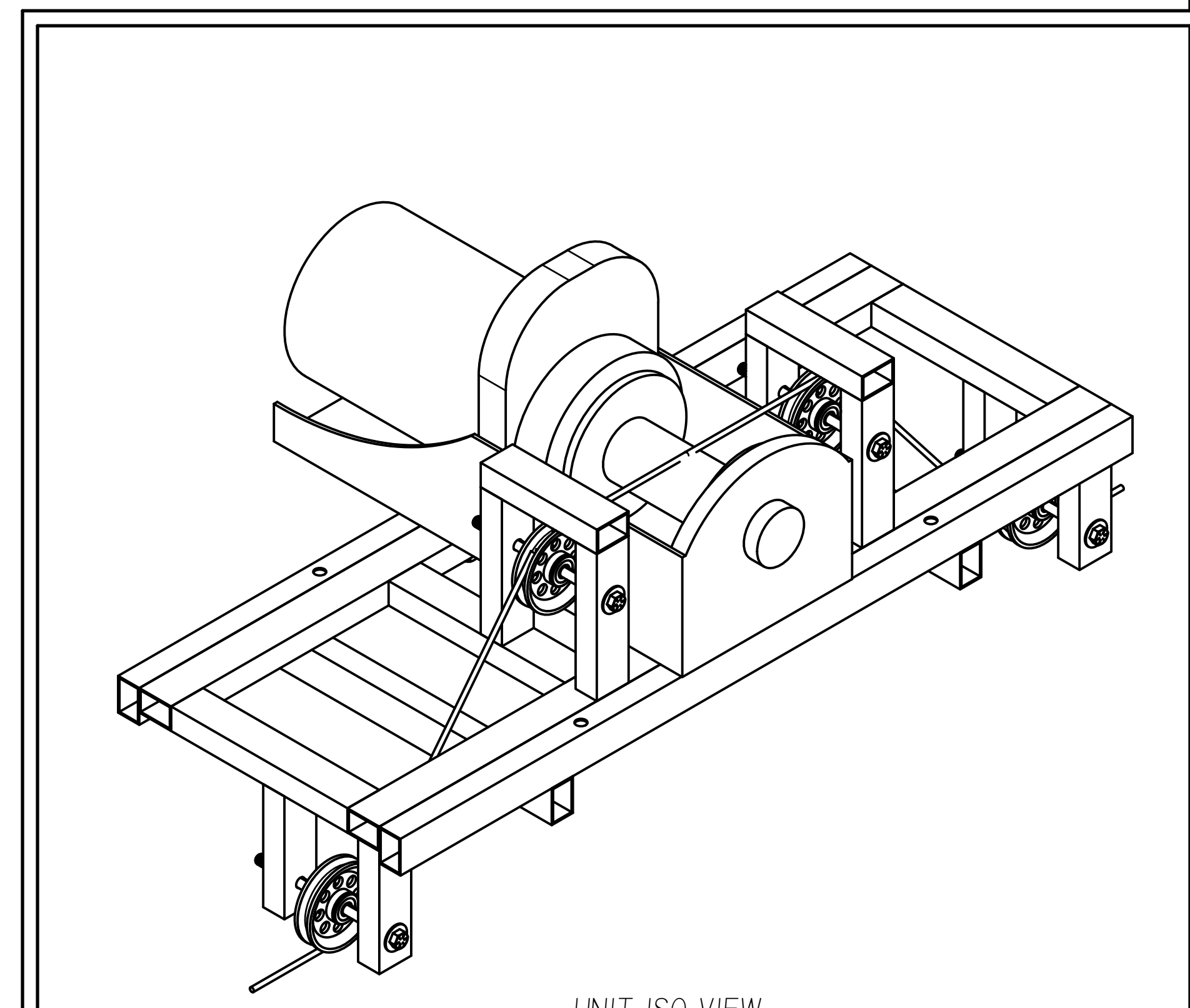
B FRAME BASE
SEE DRAWING "A" FOR ASSEMBLY

- NOTES:
1. MATERIALS: 1" X 1/2" BOX STEEL .065 WALL, BOLTS FROM MMC, STOCK MOTOR.
 2. HOLES MUST BE EXACT.
 3. KEEP WELDS AWAY FROM BOTTOM OF UNIT, OR FLAT AND CLEAN.
 4. DRILL HOLES BEFORE ASSEMBLY WITH WELDER.

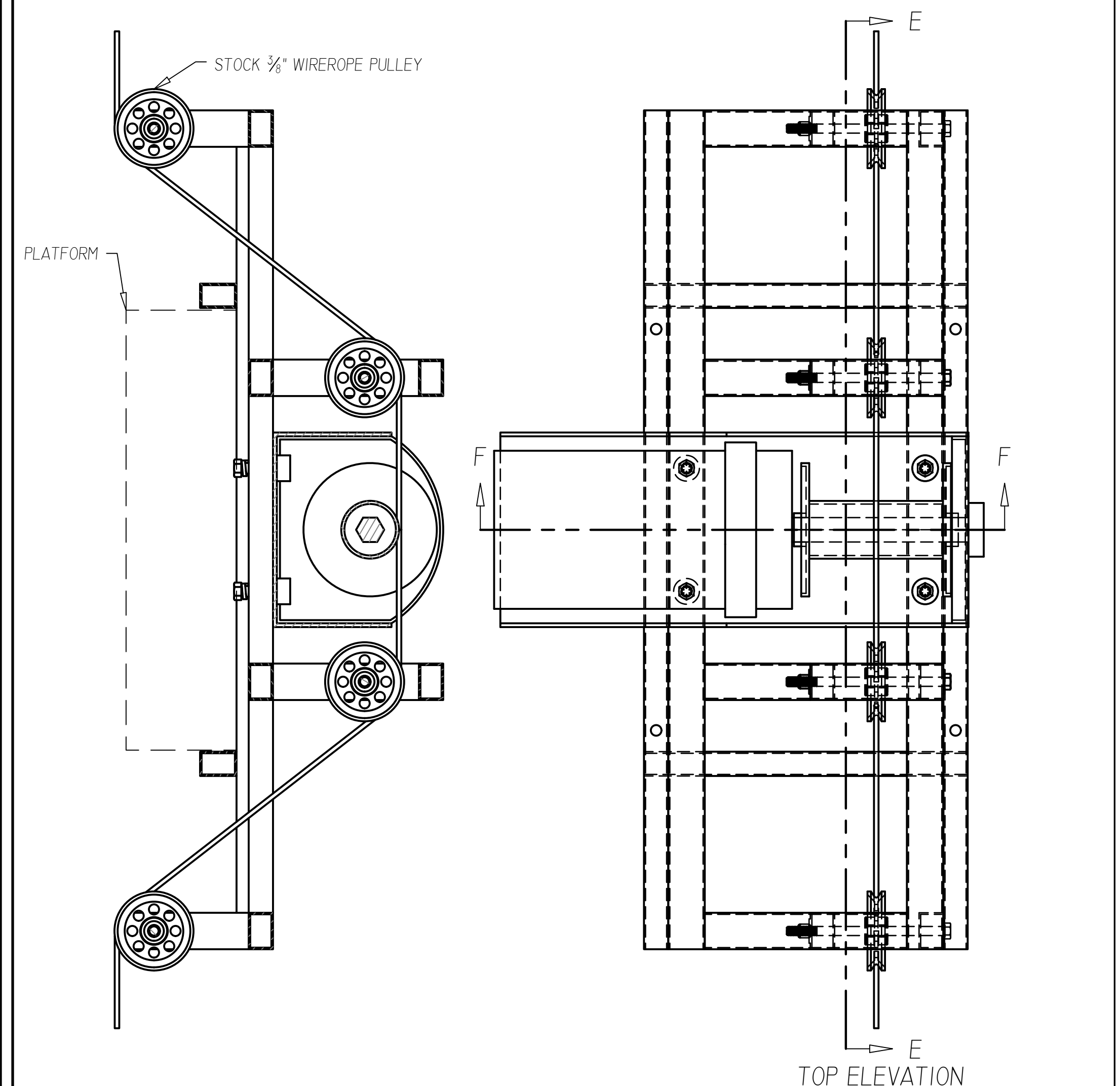


SECTION D-D
SCALE 3" = 1'-0"

C FRAME ASSEMBLY
SEE DRAWING "A" FOR ASSEMBLY

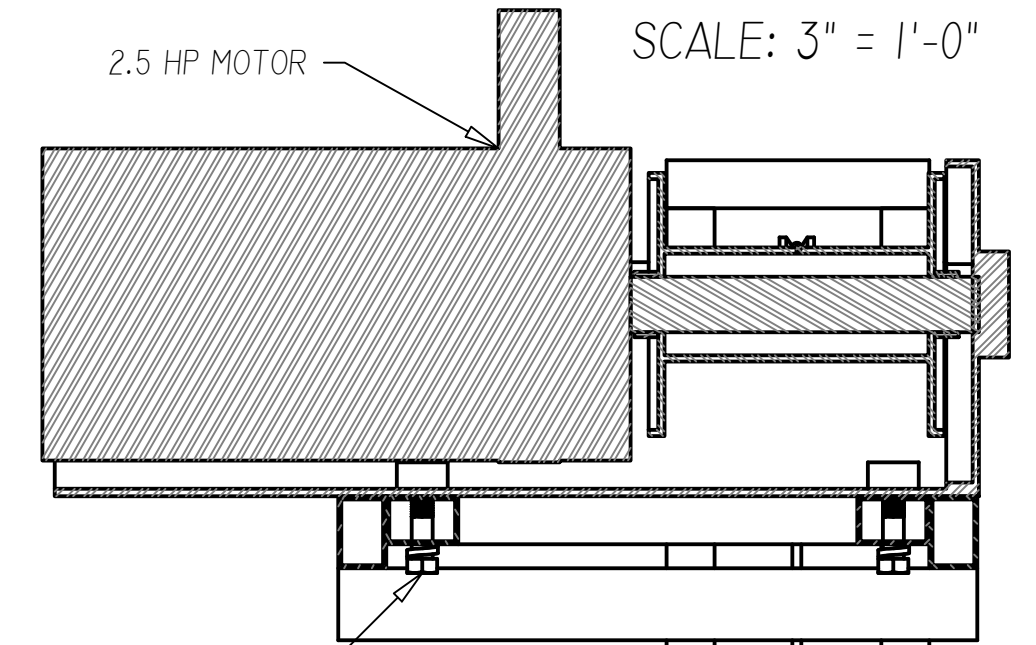


UNIT ISO VIEW
DO NOT SCALE



SECTION E-E
SCALE 3" = 1'-0"

TOP ELEVATION
SCALE: 3" = 1'-0"



SECTION F-F
SCALE 3" = 1'-0"

A UNIT ASSEMBLY
WITH STOCK PULLEYS AND MOTOR

CUT LIST	
A. DRAWING "A"	C. DRAWING "C"
A.A. NO CUTS	C.A. 1" X 1/2" BOX STEEL, .065 WALL
B. DRAWING "B"	C.A.A. 4 @ 6"
B.A. 1" X 1/2" BOX STEEL, .065 WALL	C.A.B. 4 @ 5"
B.A.A. 4 @ 2'-10 1/2"	C.A.C. 2 @ 5 1/2"
B.A.B. 4 @ 8 5/16"	C.A.D. 2 @ 1'-1 5/16"

SANTA BARBARA CITY COLLEGE THEATRE GROUP		DWG NO.
GAME'S AFOOT		15
AUTOMATION DRIVE		OF 14
DIRECTOR: KATIE LARIS	TECHNICAL DIRECTOR: BEN CROP	UNIT: 115
DESIGNER: PATRICIA FRANK	DRAFTER: BC	
DWG DATE: 09/01/18	SCALE: 3" = 1'-0" UNLESS NOTED	REV: 09/01/18